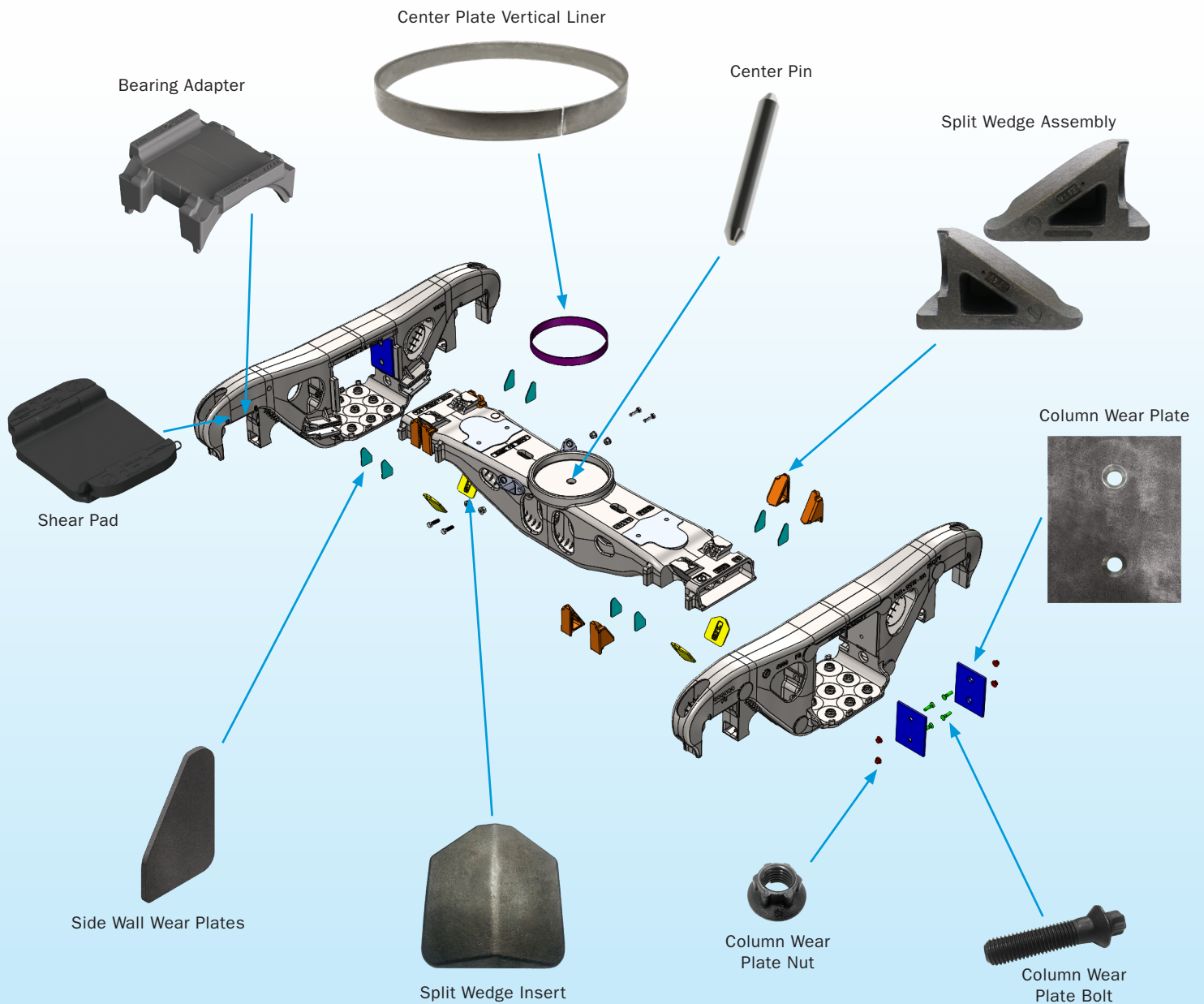




TRUCK COMPONENTS

All products meet or exceed AAR Specifications



www.stratoinc.com

Customer Service: 800-792-0500 | Fax: 800-378-7288 | customerservice@stratoinc.com



TRUCK COMPONENTS

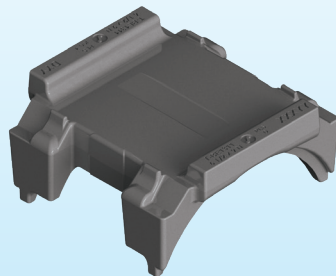
All products meet or exceed AAR Specifications

BEARING ADAPTER AND SHEAR PAD

Delivers AAR M-976 performance when used as part of an approved truck package



T-BE1340



T-BE1311

Superior design and durability.

- Strato bearing adapter provides improved truck performance. Manufactured to control hardness and strength without heat treat.
- Strato shear pad provides 2:1 longer service life. Comprised of metal plates and natural rubber blend. High resistance to abrasion and tear. Excellent dynamic fatigue performance. Less heat build-up - will not melt in high-heat applications. No need for wear liner - does not wear pedestal roof.

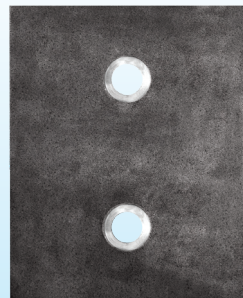
PART #	CROSS REFERENCE #	DESCRIPTION
T-BE1340	Wabtec: S2-86 6367 Comet: 100500	Shear Pad
T-BE1311	Wabtec: S2-86 6366 Comet: 100667	Bearing Adapter
T-BE1351		Bearing Adapter System (1 ea. Bearing Adapter & Shear Pad)

Designed for 100T/110T Truck Bearing size 6-1/2"x 9"
AAR Approved

COLUMN WEAR PLATES



T-SP1198



T-SP1218

- Made of 1/2" thick 1095 steel.
- Hardness precisely controlled to extend life when paired with Strato split wedges.
- Strato designed AAR M-980 test equipment to test wedges and wear plates for wear resistance and durability.

PART #	CROSS REFERENCE #	SIZE
T-SP1198	Wabtec: 5708-316 Comet: 100436	7.5" x 9.94" (100T/110T Truck)
T-SP1218	Wabtec: 5708-301 Comet: 100385	7.5" x 9.44" (125T Truck)

Column wear plates are available in two sizes.

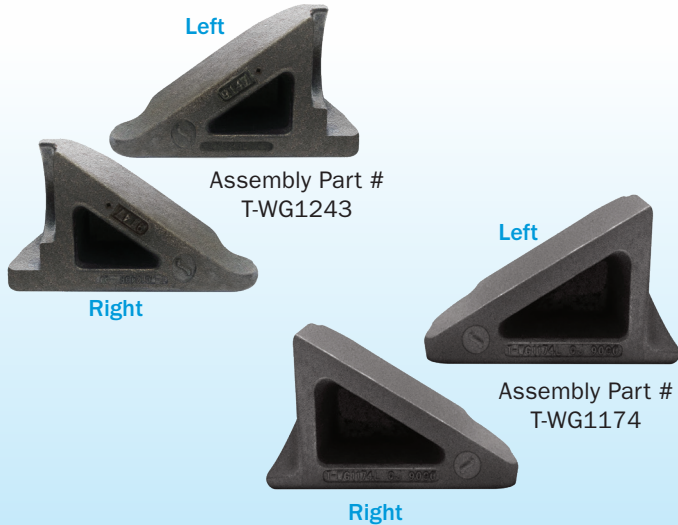


TRUCK COMPONENTS

All products meet or exceed AAR Specifications

SPLIT WEDGE ASSEMBLIES (FRICTION WEDGES)

For Barber S-2 Trucks



- Meets AAR M-980 specification.
- Made of acicular cast iron for superior wear resistance.
- Independent test lab results for AAR M-980 wear rate show Strato split wedges have **2X the wear life** when compared to other split wedges included in same test.
- Strato designed AAR M-980 test equipment to test wedges and wear plates in-house for wear resistance and durability.

Split wedge assemblies are sold as a pair – 1 left and 1 right.

ASSEMBLY PART #	CROSS REFERENCE #	SIZE
T-WG1243	Wabtec: 925-SW Comet: 100671 (L) 100672 (R)	70T Truck
T-WG1174	Wabtec: 915-SW Comet: 100664 (L) 100665 (R)	100T/110T Truck 125T Truck

SPLIT WEDGE INSERTS

For Barber S-2 Trucks

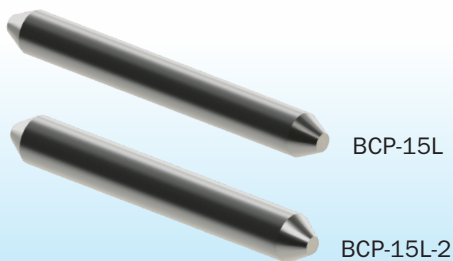


- Manufacturing Process: Forged
- Material: AISI 1030 Steel (Carbon Steel)
- Application: Weld to the bolster pocket

PART #	CROSS REFERENCE #	SIZE
T-BP1240	Wabtec: 5824 (thick) 5286 (thin)	70T S-2-B Trucks 70T S-2-C Trucks
T-BP1171	Wabtec: 5821 Comet: 100655	All S-2HD Trucks 100T/110T & 125T Trucks; Strato 70T Truck

Split wedge inserts are available in two sizes.

CENTER PINS



- Meets AAR Specification S-265

PART #	SIZE
BCP-15L	1-3/4" diameter
BCP-15L-2	2" diameter



TRUCK COMPONENTS

All products meet or exceed AAR Specifications

SIDE WALL WEAR PLATES

For Barber S-2 Trucks



T-BP1355



T-BP1300

- Made from high-strength alloy steel.
- Designed to resist abrasion.

PART #	CROSS REFERENCE #	SIZE
T-BP1355	Wabtec: 6129 Comet: 101610	70T Truck 100T/110T Truck
T-BP1300	Wabtec: 6130 Comet: 101611	125T Truck

Side wall wear plates are available in two sizes.

CENTER PLATE VERTICAL LINERS



- Material: 304 Stainless Steel

PART #	CROSS REFERENCE #	SIZE
CPVL-1001-0	Comet: 100498	16" x 2"
CPVL-1001-1	Comet: 102043	16" x 2-1/4"
CPVL-1002-0	Comet: 100493	14" x 1-1/8"
CPVL-1002-1	Comet: 100492	14" x 1-3/8"

HARDWARE



T-SP1001

T-SP1000

T-SP1003

- Bolt and nut made of high-strength alloy steel.
- Break-off bolt head with paraffin wax for lubrication during installation.
- Zinc phosphate coating to resist corrosion.

PART #	CROSS REFERENCE #	SIZE
T-SP1001	Wabtec: 6325	Nut 3/4" - 10
T-SP1000	Wabtec: 6120 Comet: 100451	Bolt 3/4" - 10, 3-5/32" Length
T-SP1003		Bolt 3/4" - 10, 2-5/16" Length

Used on side frame assembly. Available in additional sizes.