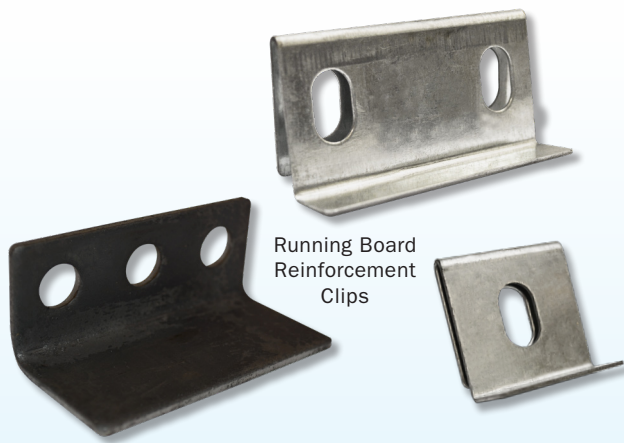
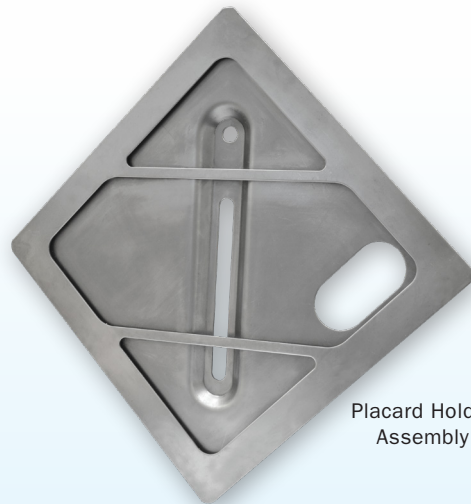




# MISCELLANEOUS REPLACEMENT PARTS



Running Board  
Reinforcement  
Clips



Placard Holder  
Assembly



Brake Pins



8 Inch Sheave  
Wheel



Running Board  
Washers

[www.stratoinc.com](http://www.stratoinc.com)

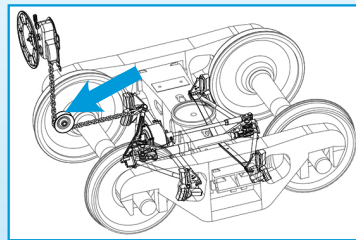
Customer Service: 800-792-0500 | Fax: 800-378-7288 | [customerservice@stratoinc.com](mailto:customerservice@stratoinc.com)



# MISCELLANEOUS REPLACEMENT PARTS

## 8 INCH SHEAVE WHEEL

Chain pulley / guide used to route the hand brake chain on a freight railcar



### PART #

SW-1001

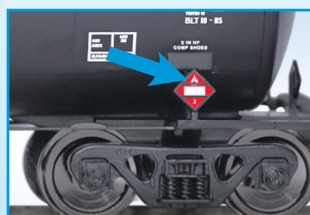
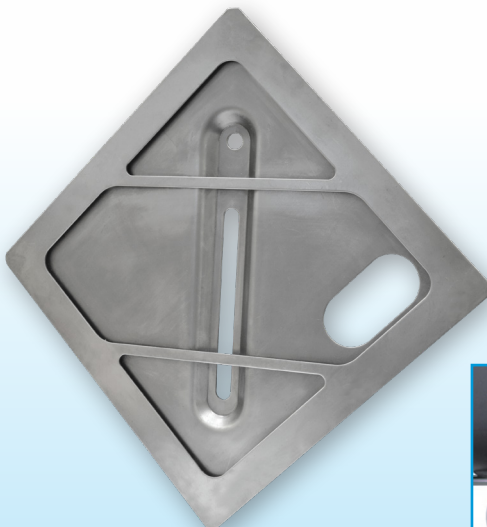
#### Features:

- 8" outside diameter / 6.5" diameter chain groove
- 1-1/8" diameter pin hole
- High quality cast iron
- Chain groove accommodates all standard chain

#### Benefits:

- Low cost
- Meets AAR requirements per S-475
- Long service life
- Durable design and material
- Works well in most applications where chain needs to be routed on a freight car

## PLACARD HOLDER ASSEMBLY



### PART #

PH-1003

#### Features:

- Meets AAR / FRA specifications and requirements
- Durable 14 gauge steel
- Universal mounting configuration
- Easy "slide in / slide out" design
- Precision stampings

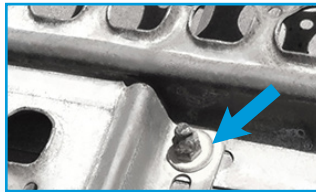
#### Benefits:

- Low cost
- Short lead times
- Less susceptible to field damage
- Accurate fit
- Ease of insertion and removal of placards



# MISCELLANEOUS REPLACEMENT PARTS

## RUNNING BOARD REINFORCEMENT CLIPS



### Features:

#### RC-1001

##### Three Mounting Holes

- 1-1/2" leg x 1-1/4" leg with mounting holes
- 3 holes - 0.44 diameter
- High quality 0.132 thick low carbon steel

#### RC-1002

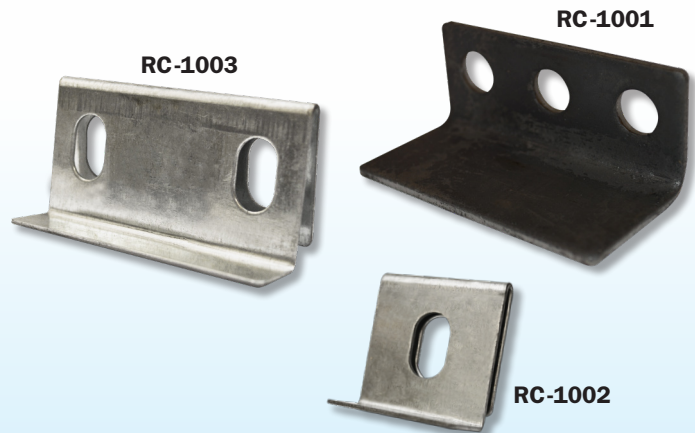
##### Single Mounting Slot

- 0.6" leg x 1-1/2" leg with 7/16" wide mounting slot
- High quality 19 gauge galvanized steel

#### RC-1003

##### Double Mounting Slots

- 0.6" leg x 1-1/2" leg with two 7/16" wide mounting slots
- High quality 19 gauge galvanized steel



### Benefits:

- Low cost
- Easily weldable
- Extend service life of running board to avoid the cost of replacement
- Durable design and material
- Works well in most applications where repair of running board flange is required

## RUNNING BOARD WASHERS

RBW-1001



RBW-1002

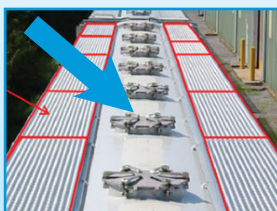


### Features:

- Running board washers work with standard carriage bolts
- Zinc coated for corrosion resistance
- Designed for common running board styles

### Benefits:

- Dimensional stability to hold running boards firmly in place
- Heavy gauge metal for improved clamp load transfer
- Corrosion resistant





# MISCELLANEOUS REPLACEMENT PARTS

## BRAKE PINS



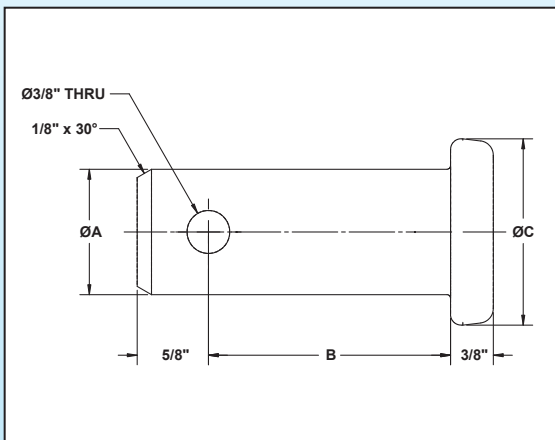
### Features:

- Available in most common standard sizes
- Hardened bearing area
- High grade, high carbon steel

### Benefits:

- Low cost
- Long service life
- Superior wear characteristics
- Maximum strength

Brake Pin Size Chart:



PART #	A	B	C
P-2001	1"	5"	1-5/8"
P-2002	1-11/32"	4"	1-7/8"
P-2004	1-3/32"	6-1/4"	1-5/8"
P-2006	1-3/32"	5-1/2"	1-5/8"
P-2007	1-7/32"	3-1/2"	1-3/4"
P-2009	1-3/32"	6-3/4"	1-5/8"
P-2010	1-3/32"	7"	1-5/8"
P-2011	1-3/32"	7-1/2"	1-5/8"
P-2012	1-7/16"	3-1/2"	2"
P-2013	1-3/32"	3-3/4"	1-5/8"
P-2029	1-3/32"	2-1/8"	1-5/8"
P-2030	1-3/32"	2-1/2"	1-5/8"

PART #	A	B	C
P-2032	1-3/32"	3"	1-5/8"
P-2033	1-3/32"	3-1/4"	1-5/8"
P-2034	1-3/32"	3-1/2"	1-5/8"
P-2036	1-3/32"	4"	1-5/8"
P-2037	1-3/32"	4-1/2"	1-5/8"
P-2038	1-3/32"	4-3/4"	1-5/8"
P-2039	1-3/32"	5"	1-5/8"
P-2046	1-11/32"	3"	1-7/8"
P-2047	1-11/32"	3-1/4"	1-7/8"
P-2070	1-7/32"	3"	1-3/4"
P-2071	1-3/32"	4-1/4"	1-5/8"
P-2072	1-3/32"	5-7/8"	1-5/8"