

VERTICAL PIN RETAINER BOLT REPLACEMENT

AS PER AAR CIRCULAR LETTER C-10633, DATED NOVEMBER 21, 2007

STRATO EOC-BRS KITS CURRENTLY AVAILABLE:

ALL PIN RETAINERS PATENTED

STRATO PART #: EOC-BRS



**EOC-BRS KIT IN
APPLICATION**

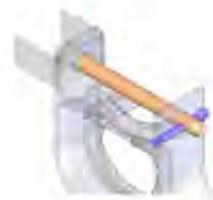


**RECOMMENDED RETAINER DEVELOPED FOR FIELD INSTALLATION.
CAN BE INSTALLED IN PLACE WITH NO NEED TO DROP THE
F-BRACKET. FITS ALMOST ALL BRACKETS.**

STRATO PART #: EOC-BRS2



**EOC-BRS2 KIT IN
APPLICATION**



**NEW CARS WOULD USE THIS FORMAT BECAUSE THE RETAINER
COMES WITH THE F-BRACKET, SO YOU ONLY NEED THE PIN
AND COTTER PIN. FIELD CHANGES NEED THE COMPLETE
KIT AS THE OLD RETAINER WOULD BE CUT OFF
(SEE EOC-BRS5).**

**Customer Service - Phone: (800)792-0500 Fax: (800)378-7286
customerservice@stratoinc.com**

100 New England Avenue, Piscataway, NJ 08854

STRATO PART #: EOC-BRS3



EOC-BRS3 KIT IN APPLICATION

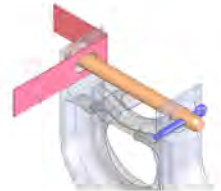


DESIGNED TO RETAIN BOTH ENDS OF THE PIN, NOT JUST ONE. THIS DESIGN HAS BEEN REQUESTED BY A MAJOR RAIL CAR LEASING COMPANY AND IS AVAILABLE TO ALL RAILROADS.

STRATO PART #: EOC-BRS4



EOC-BRS4 KIT IN APPLICATION

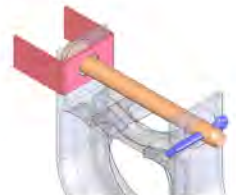


CUSTOM DESIGN FOR A MAJOR RAILROAD BUT AVAILABLE TO ALL OTHER CUSTOMERS. ALLOWS A DOUBLE BEND FOR ADDED STRENGTH.

STRATO PART #: EOC-BRS5



EOC-BRS5 KIT IN APPLICATION



DESIGN AS SHOWN IN THE AAR RELEASE. REQUIRES F-BRACKET TO BE DROPPED TO INSTALL RETAINER. NON-STRATO F-BRACKETS AND BRACKETS MADE PRIOR TO 2002 MAY HAVE CLEARANCE ISSUES ON FITTING THE RETAINER.

**Customer Service - Phone: (800)792-0500 Fax: (800)378-7286
customerservice@stratoinc.com**

100 New England Avenue, Piscataway, NJ 08854