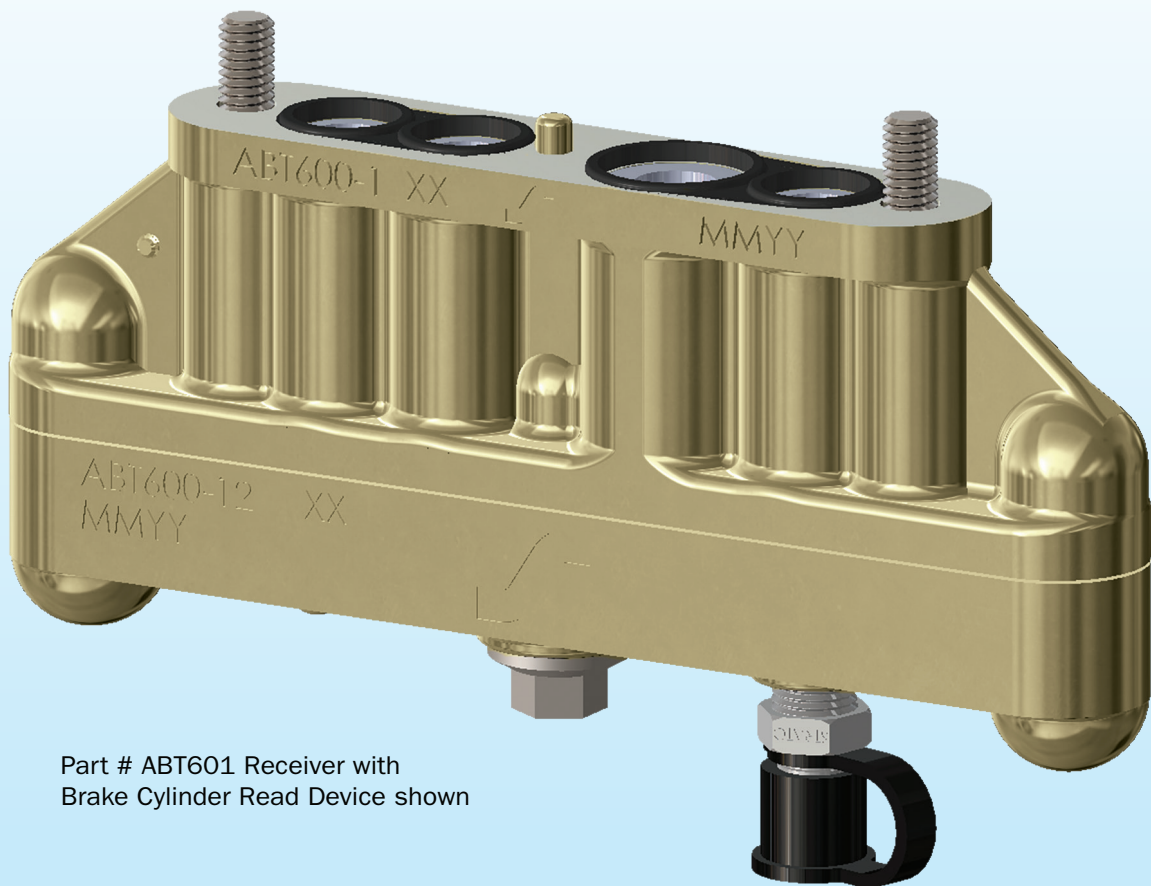




4-PORT RECEIVER

INSTALLATION INSTRUCTIONS

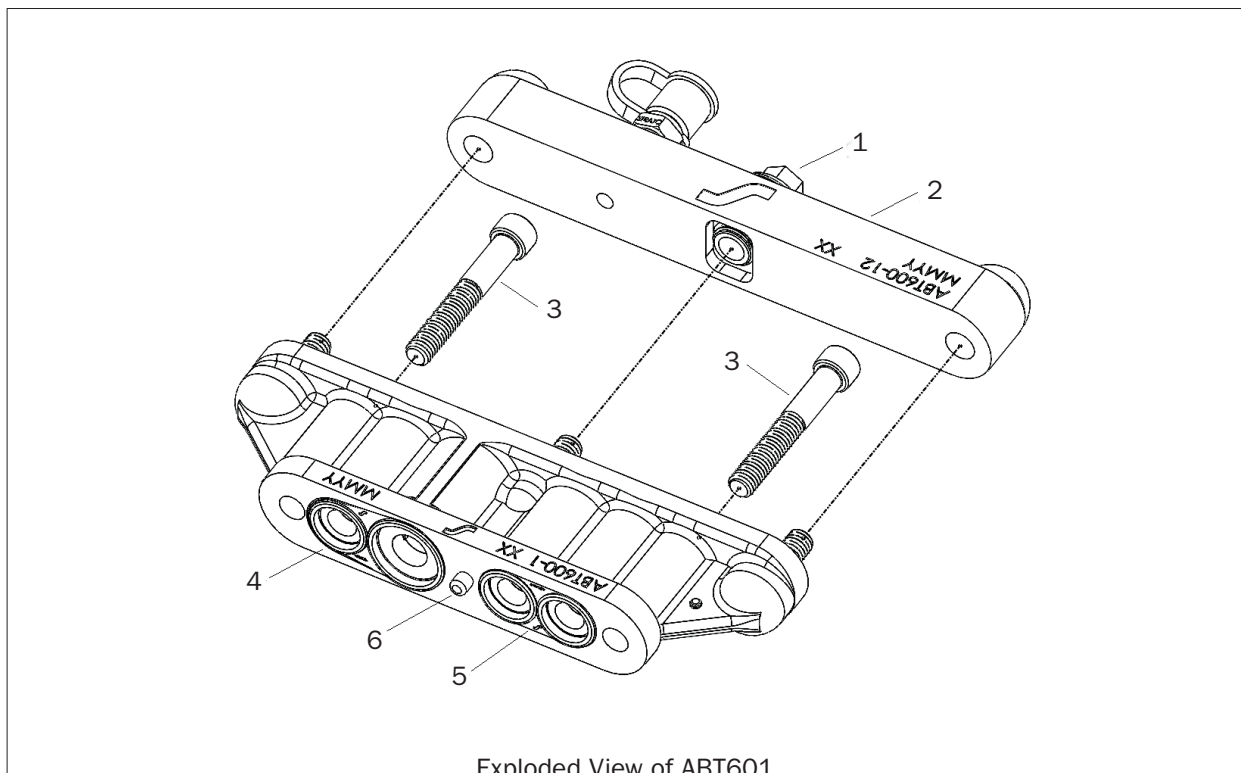
for Pipe Brackets with Built-In Access Plates



Part # ABT601 Receiver with
Brake Cylinder Read Device shown

Instructions

1. Remove existing Pipe Bracket Cover, Pipe Bracket Cover Hardware, and Pipe Bracket Cover Gaskets.
2. Use a 9/16" socket to loosen the center hex head nut (1) on the 4-Port Receiver. Remove the 4-Port Receiver cover (2) to expose the two socket head cap screws (3) within the 4-Port Receiver body.
3. Coat the threads of the 4-Port Receiver socket head cap screws (3) with Loctite 242.
4. Ensure that the gaskets (4 & 5) on the 4-Port Receiver are fully seated. Place the 4-Port Receiver against the Pipe Bracket, ensuring that the alignment post (6) and socket head cap screws (3) are properly aligned with the respective holes on the Pipe Bracket.
Note: The alignment post on the 4-Port Receiver will ensure the 4-Port Receiver is correctly oriented.
5. Torque the socket head cap screws (3) to 20 +/-2 ft. lbs.
6. Replace the previously uninstalled 4-Port Receiver cover (2) and torque the hex head cap nut (1) to 20-24 ft. lbs.



The entire air brake equipment must then be tested in accordance with the current issue of the Code of Air Brake System Tests for Freight Equipment (AAR Standard S-486).