

# **We Know Every APU is Unique**

## ***That's Why Our Service Is Customized To You***

Having assisted in the installation of over 30 locomotive APU units, Strato understands the concerns and dilemmas many customers such as yourself are having. We often come to customers who are experiencing hose assemblies rubbing together, clamping of hose assemblies, kinks in the hose assemblies, incorrect twist angles, improper fitting arrangements and excessive heat in specific areas of the engine compartment.



***With our attention to details and to our customer's specific needs, we can help make these problems disappear!***

Because we know how important the APU is to the proper operation of a locomotive, we make sure our representatives are available from the initial project consulting phase to final installation. Our representatives are on hand to:

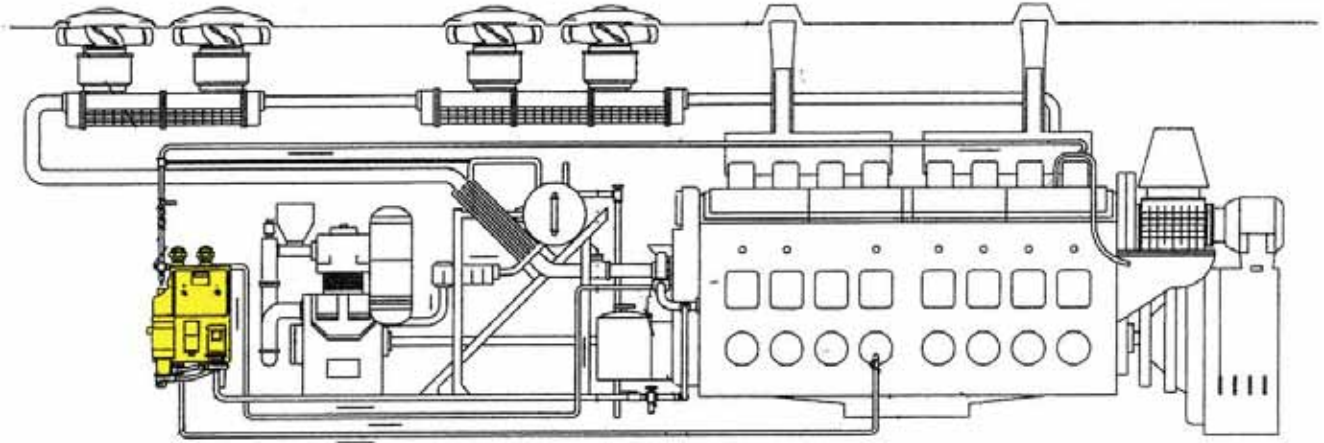
- Answer all of your APU hose related needs
- Provide Engineering assistance through all phases of development
- Outfit all styles and lengths of the hose assemblies
- Create custom kits to meet your exact dimensions
- Provide installation assistance
- Follow-up to ensure designed kits are performing as intended



100 New England Avenue  
Piscataway, NJ 08854

Customer Service Toll-Free Phone (800) 792-0500 • Toll Free Fax (800) 378-7286  
Main Phone (732) 981-1515 • Fax (732) 981-1222

# APU Kits and Components



## Custom Kits Include:

- Oil, Water, Fuel hose assemblies of varying length and fitting configurations.
- Rigid pipe arrangement, transferring engine cooling water to APU.
- Saddle fittings that allow connection of hose into pipe arrangements.

## Hose Specification:

**Hose:** Parker 213PKR hose, elastomer tube, high tensile steel wire braid reinforcement, black textile braid cover.

**Application and Temperature Range:** Petroleum based hydraulic fluids and lubricating oils, diesel fuels, crude, fuel oils and anti-freeze solutions within a range of -40 degrees F to +302 degrees F. Maximum working pressure for hoses in kit is 300PSI.

**Fire Sleeve:** A flame resistant sheath that protects the hose from extreme temperature conditions. Temperature range: -65 degrees F to +500 degrees F.

## Additional Features:

- Check valve / single direction flow valve
- O-ring Face Seal Adapters
- Quick Disconnect
- Abrasion resistant hydraulic hose