

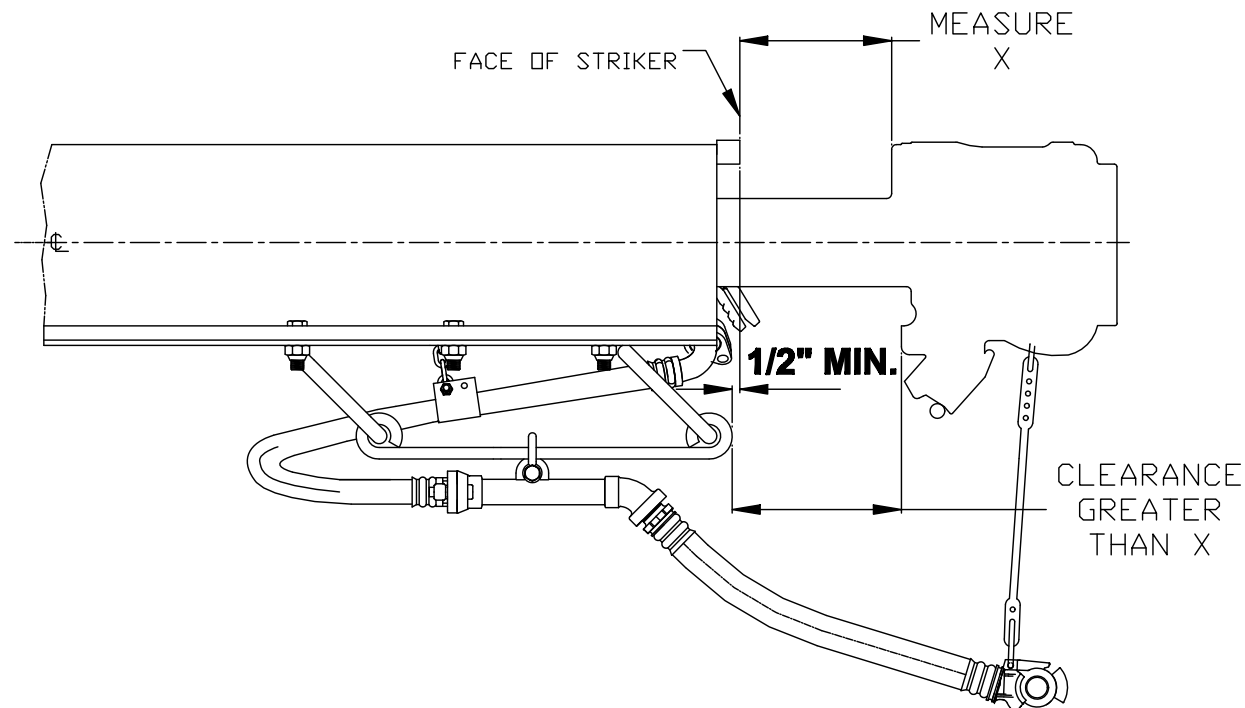
THIS DRAWING IS THE PROPERTY OF STRATO, INCORPORATED. THIS DRAWING IS LOANED UPON THE EXPRESS CONDITION THAT IT SHALL NOT BE REPRODUCED IN ANY MANNER AND SHALL BE RETURNED UPON DEMAND. IT IS SUBMITTED FOR EVALUATION PURPOSES ONLY. INFORMATION CONTAINED THEREIN, SHALL NOT BE USED NOR DISCLOSED TO THIRD PARTIES WITHOUT THE WRITTEN CONSENT OF STRATO, INCORPORATED.

REV	DATE	DESCRIPTION	CHANGE BY	CHECKED BY

PRODUCE THE NOTICE SHOWN ON THE LEFT.

S427 INSTALLATION NOTICE


CAUTION: BE SURE TO SATISFY THE REQUIREMENTS DESCRIBED BY THE DRAWING BELOW TO ENSURE PROPER FUNCTION OF THIS ARRANGEMENT.



CAUTION: TROLLEY ROD LOCATION MUST MEET THESE REQUIREMENTS TO AVOID INTERFERENCE WITH THE UNCOUPLING MECHANISM.

S427-IW

DRAWN TO SCALE:		TOLERANCES FRACTIONS — ± 1/64" TWO PLACES — ± 0.010 THREE PLACES — ± 0.005 ANGLES — ± 1/2° HOSE ASSY. — ± 1% O.A.L.
YES <input type="checkbox"/>	NO <input checked="" type="checkbox"/>	
PLOTTED TO SCALE:		
YES <input type="checkbox"/>	NO <input checked="" type="checkbox"/>	

 STRATO, INC. 100 New England Ave., Piscataway, N.J. 08854		
DESCRIPTION INSTALLATION NOTICE FOR S427		
DRAWN BY LH	CHECKED BY KMCK	DATE 12/17/03
SCALE NONE	DWG. No. S427-IW	REV

00-114 REV. B.