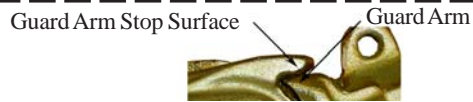


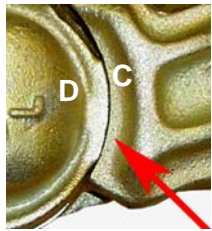
IMPORTANT
GLADHAND HOSE COUPLING INFORMATION
 Below are ways to identify if a gladhand is correctly or incorrectly coupled.



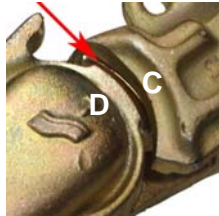
1. The guard arm centering shoulder (C) should mate with the body centering shoulder (D).



Correct



Incorrect



This information is a guideline only



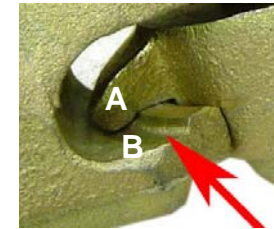
Toll-Free Phone: (800) 792-0500
 Toll-Free Fax: (800) 378-7286
 Main Phone: (732) 981-1515

PL-GUCP 10/2003

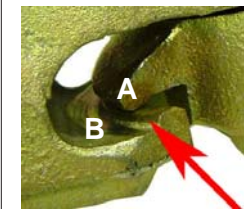
2. Gladhand's lip bead (A) should be fully locked inside the guard arm groove (B) of the opposite gladhand.



Correct



Incorrect



3. Face of gladhands should be centered (Shown) and gaskets inside the gladhands should be centered (Not Shown).

Correct



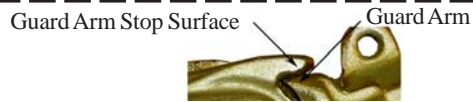
Incorrect



NOTES

- Use body centering shoulder to center gaskets when coupling.
- Guard arm stop surface should mate with guard arm.

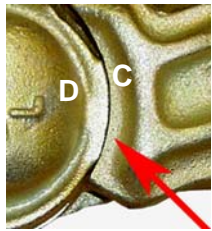
IMPORTANT
GLADHAND HOSE COUPLING INFORMATION
 Below are ways to identify if a gladhand is correctly or incorrectly coupled.



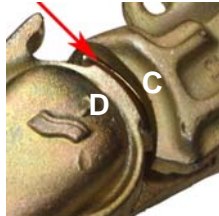
1. The guard arm centering shoulder (C) should mate with the body centering shoulder (D).



Correct



Incorrect



This information is a guideline only



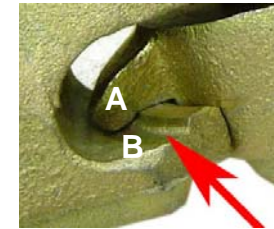
Toll-Free Phone: (800) 792-0500
 Toll-Free Fax: (800) 378-7286
 Main Phone: (732) 981-1515

PL-GUCP 10/2003

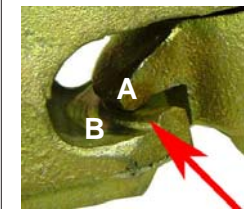
2. Gladhand's lip bead (A) should be fully locked inside the guard arm groove (B) of the opposite gladhand.



Correct



Incorrect



3. Face of gladhands should be centered (Shown) and gaskets inside the gladhands should be centered (Not Shown).

Correct



Incorrect



NOTES

- Use body centering shoulder to center gaskets when coupling.
- Guard arm stop surface should mate with guard arm.