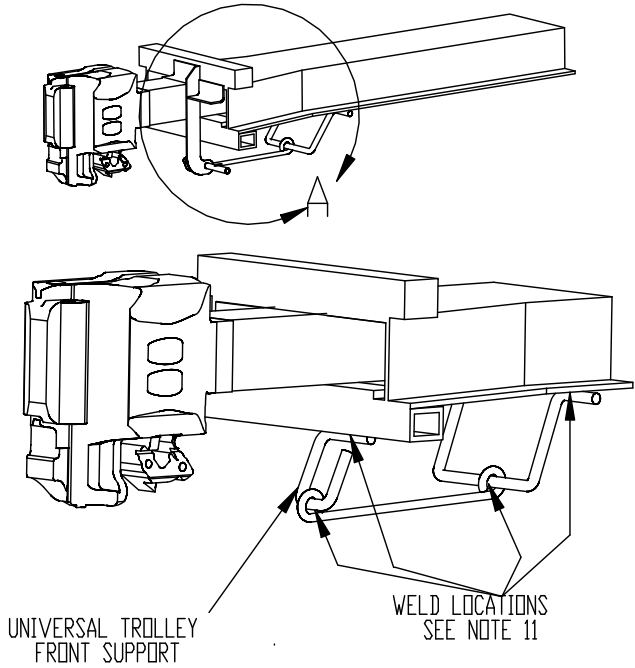
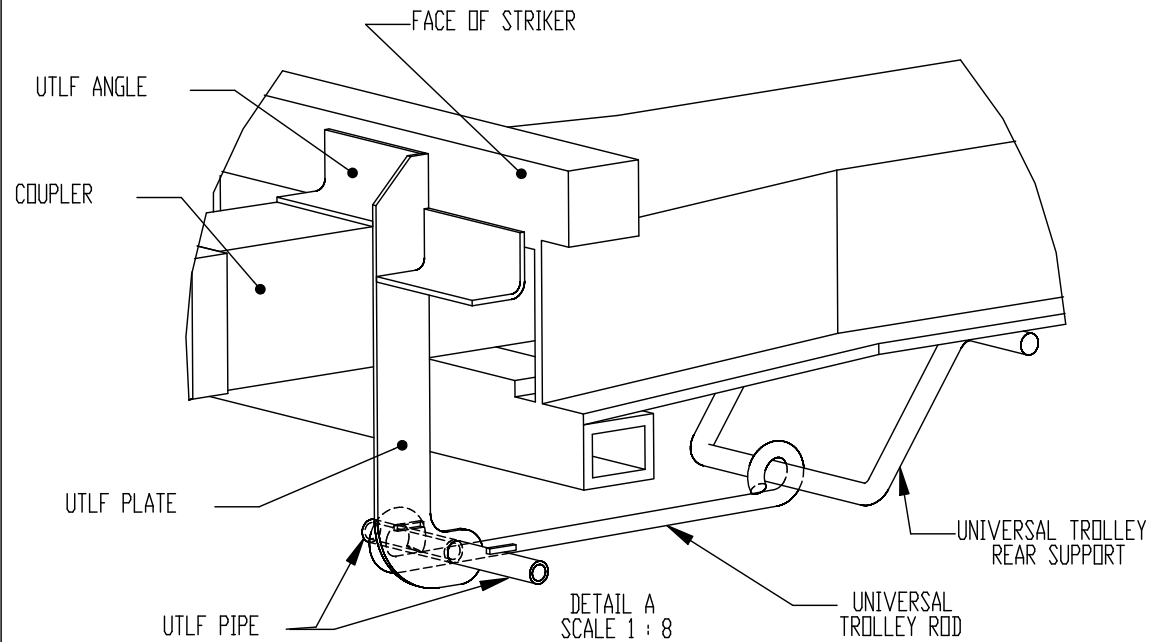


THIS DRAWING IS THE PROPERTY OF STRATO, INC.  
 THIS DRAWING IS LOANED UPON THE EXPRESS CONDITION THAT IT  
 SHALL NOT BE REPRODUCED IN ANY MANNER, AND SHALL BE RETURNED  
 UPON DEMAND. IT IS SUBMITTED FOR EVALUATION PURPOSES ONLY.  
 INFORMATION CONTAINED THEREIN, SHALL NOT BE USED, OR  
 DISCLOSED TO THIRD PARTIES WITHOUT THE WRITTEN CONSENT OF  
 STRATO, INC.

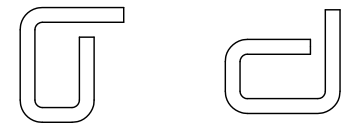
# UNIVERSAL TROLLEY LOCATING FIXTURE INSTRUCTION SHEET (F-COUPLER VERSION)




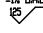
PURPOSE: TOOL USED TO PROPERLY LOCATE THE TROLLEY ROD WHILE INSTALLING THE TROLLEY ROD REAR SUPPORT.

**INSTRUCTIONS FOR USE:**

1. REMOVE ALL BROKEN OR FATIGUED TROLLEY ROD COMPONENTS.
2. PLACE ANGLE OF EOCT-UTLF ON COUPLER AND PRESS FLAT AGAINST THE FACE OF THE STRIKER. NOTE THAT THE ANGLE USED IN THIS INSTRUCTION IS FOR STANDARD LEVEL CARS. THE OTHER ANGLE PROVIDED IS FOR LOW LEVEL CARS.
3. ENSURE THAT PLATE OF EOCT-UTLF IS IN CONTACT WITH THE SIDE OF THE COUPLER SHANK, BR AND AL FOR STANDARD LEVEL CARS AND BL AND AR FOR LOW LEVEL CARS.
4. SLIDE TROLLEY ROD ONTO THE EOCT-UTLF PIPE THAT IS FACING THE CENTER OF THE CAR.
5. FEED THE TROLLEY REAR SUPPORT THROUGH THE OTHER LOOP OF THE TROLLEY ROD.
6. WELD THE TROLLEY REAR SUPPORT TO THE CAR FRAME SO THAT THE TROLLEY ROD IS LEVEL AND IS CENTERED ON THE REAR SUPPORT. THE TROLLEY REAR SUPPORT MAY BE SLANTED IN ANY DIRECTION IN ORDER TO PROVIDE ACCESS TO SUPPORT PLATES.
7. FULLY WELD THE LOOP OF THE TROLLEY ROD TO THE TROLLEY REAR SUPPORT.
8. REMOVE THE EOCT-UTLF FROM THE CAR.
9. FEED THE TROLLEY FRONT SUPPORT THROUGH THE FREE LOOP OF THE TROLLEY ROD AND WELD TO THE COUPLER CARRIER WITH THE OPEN END ON TOP, AS SHOWN.
10. FULLY WELD THE LOOP OF THE TROLLEY ROD TO THE TROLLEY FRONT SUPPORT.
11. CONTINUE WITH REPAIR AND/OR ASSEMBLY. TROLLEY RODS ARE A-36 OR A575 GR 1020 STEEL, IT IS IMPERATIVE THAT ALL WELDING BE DONE IN ACCORDANCE WITH ANSI/AWS D15.1 - 03, OR LATER, TO ENSURE QUALITY AND STRENGTH.



ONLY APPROVED ORIENTATION OF UTFLS

NEXT HIGHER ASSEMBLY	 Quality Railroad Products		100 New England Avenue, Piscataway, N.J. 08854	
X			SD-4 REV. D	
REFERENCE DRAWINGS	DESCRIPTION			
	EOCT-UTLF INSTRUCTION SHEET			
UNLESS OTHERWISE SPECIFIED TOLERANCES ARE AS FOLLOWS:	DRAWN BY	CHECKED BY	DATE	
FRACTIONS ——— 1/16"	J.R.	D.D.	09/01/04	
TWO PLACES ——— 0.010	SCALE	DWG. NO.	REV	
THREE PLACES ——— 0.005	NTS	EOCT-UTLF-IW		
ANGLES ——— 1/2°	SHEET 1 OF 1			
HOSE ASSY. ——— 1/2" DIA.				
FINISHED SURFACE ——— 				
FILLETS & EDGES A/R OR CHAMF.				