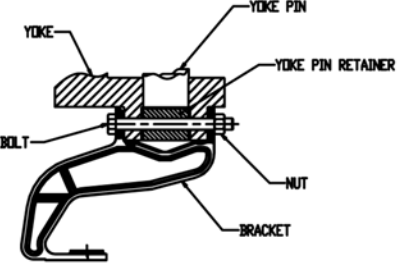


THIS DRAWING IS THE PROPERTY OF STRATO, INC. IT SHALL NOT BE REPRODUCED IN ANY MANNER, AND SHALL BE RETURNED TO STRATO, INC. IF IT IS REPRODUCED IN ANY MANNER. THIS DRAWING IS FOR INFORMATION ONLY. STRATO, INC. IS NOT RESPONSIBLE FOR ANY DAMAGE TO PERSONS OR PROPERTY CAUSED BY THE USE OF THIS DRAWING. STRATO, INC. IS NOT RESPONSIBLE FOR ANY DAMAGE TO PERSONS OR PROPERTY CAUSED BY THE USE OF THIS DRAWING. STRATO, INC.

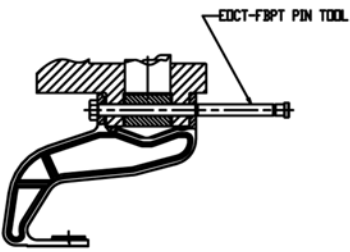
WARNING!!!

THE BRACKET (AND OTHER PARTS IF NECESSARY) MUST BE SUPPORTED DURING THE ENTIRE PROCESS TO PREVENT PERSONAL INJURY AND/OR PROPERTY DAMAGE



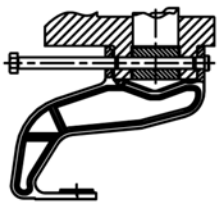
STEP 1.

REMOVE THE NUT (LOOSEN, CUT OR BURN OFF)



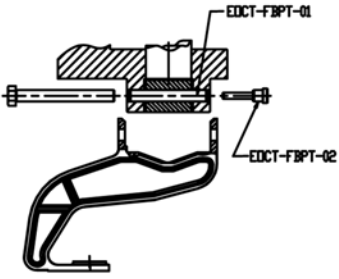
STEP 2.

ALIGN PIN TOOL WITH BOLT



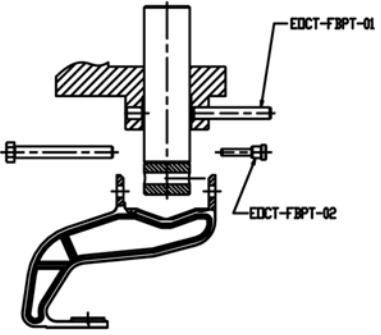
STEP 3.

DRIVE PIN TOOL UNTIL ITS SHOULDER REACHES THE BRACKET



STEP 4.

REMOVE BOLT AND THE END OF THE PIN TOOL (EDOCT-FBPT-02); LEAVE THE ALIGNMENT PIN (EDOCT-FBPT-01) IN THE YOKE TO HOLD THE YOKE PIN IN POSITION.



STEP 5 (OPTIONAL)

TO REMOVE YOKE PIN, REMOVE PIN TOOL FIRST AS SHOWN.

TO INSTALL, POSITION YOKE PIN AND YOKE PIN RETAINER, THEN USING THE PIN TOOL TO ALIGN BOLT HOLES AND HOLD THE PARTS IN POSITION (RETURN TO STEP 4'S POSITION).

- NOTE:**
- FOLLOW THESE STEPS TO REMOVE BOLT AND BRACKET.
 - TO INSTALL, REVERSE THE ABOVE PROCEDURE, USE THE NEW BOLT TO PUSH OUT THE PIN TOOL.
 - EDOCT-FBPT WORKS FOR THE FOLLOWING STRATO F-STYLE BRACKETS WITH OPEN WORKING SPACE:
 FE0C-F43BF, FE0C-F43BR, FE0C-F43BR-S,
 FE0C-F45BR, FE0C-F45BR-S, FE0C-K43C,
 FE0C-PB, FE0C-PB13, FE0C-PBR, FE0C-PBR-S
 - FE0C-PBR-S IS SHOWN IN THIS INSTRUCTION.
 - DO NOT USE THIS TOOL ON ANY OTHER BRACKET OF DIFFERENT STYLE AND BE CAUTIOUS WHEN USING IT FOR BRACKETS OF SIMILAR STYLE BUT NOT LISTED IN NOTE 3.
 - FOR ABOVE LISTED BRACKETS, IF THERE ARE OBSTACLES ON ONE SIDE OF THE BOLT WHICH LIMIT THE WORKING SPACE (SMALLER THAN 6"), PLEASE USE EDOCT-FBPT-TS (A THREE-PIECE TOOL).

NEXT HOOPER ASSEMBLY		STRATO Quality Railroad Products		600 New England Avenue Phoenix, N.J. 08054	
X				80-70 REV. A	
REFERENCE DRAWINGS		DESCRIPTION APPLICATION INSTRUCTION -PIN TOOL OPERATION			
UNLESS OTHERWISE SPECIFIED TOLERANCES ARE AS FOLLOWS:		DRAWN BY czhang		CHECKED BY DATE CREATED 09/08/2004	
FRAMES — 1/8" ±		SCALE NTS		DWG. NO. EDOCT-FBPT-IW	
TWO PLACES — 1/16" ±		REV		REV	
THREE PLACES — 1/32" ±		SHEET 1 OF 1			
FOUR PLACES — 1/64" ±					
HOLE DIA. — 1/16" ±					
HOLE DIA. — 1/32" ±					
HOLE DIA. — 1/64" ±					
HOLE DIA. — 1/128" ±					
HOLE DIA. — 1/256" ±					
HOLE DIA. — 1/512" ±					
HOLE DIA. — 1/1024" ±					
HOLE DIA. — 1/2048" ±					
HOLE DIA. — 1/4096" ±					
HOLE DIA. — 1/8192" ±					
HOLE DIA. — 1/16384" ±					
HOLE DIA. — 1/32768" ±					
HOLE DIA. — 1/65536" ±					
HOLE DIA. — 1/131072" ±					
HOLE DIA. — 1/262144" ±					
HOLE DIA. — 1/524288" ±					
HOLE DIA. — 1/1048576" ±					
HOLE DIA. — 1/2097152" ±					
HOLE DIA. — 1/4194304" ±					
HOLE DIA. — 1/8388608" ±					
HOLE DIA. — 1/16777216" ±					
HOLE DIA. — 1/33554432" ±					
HOLE DIA. — 1/67108864" ±					
HOLE DIA. — 1/134217728" ±					
HOLE DIA. — 1/268435456" ±					
HOLE DIA. — 1/536870912" ±					
HOLE DIA. — 1/1073741824" ±					
HOLE DIA. — 1/2147483648" ±					
HOLE DIA. — 1/4294967296" ±					
HOLE DIA. — 1/8589934592" ±					
HOLE DIA. — 1/17179869184" ±					
HOLE DIA. — 1/34359738368" ±					
HOLE DIA. — 1/68719476736" ±					
HOLE DIA. — 1/137438953472" ±					
HOLE DIA. — 1/274877906944" ±					
HOLE DIA. — 1/549755813888" ±					
HOLE DIA. — 1/1099511627776" ±					
HOLE DIA. — 1/2199023255552" ±					
HOLE DIA. — 1/4398046511104" ±					
HOLE DIA. — 1/8796093022208" ±					
HOLE DIA. — 1/17592186444416" ±					
HOLE DIA. — 1/35184372888832" ±					
HOLE DIA. — 1/70368745777664" ±					
HOLE DIA. — 1/14073749155328" ±					
HOLE DIA. — 1/28147498310656" ±					
HOLE DIA. — 1/56294996621312" ±					
HOLE DIA. — 1/112589993222624" ±					
HOLE DIA. — 1/225179986445248" ±					
HOLE DIA. — 1/450359972890496" ±					
HOLE DIA. — 1/900719945780992" ±					
HOLE DIA. — 1/1801439891561984" ±					
HOLE DIA. — 1/3602879783123968" ±					
HOLE DIA. — 1/7205759566247936" ±					
HOLE DIA. — 1/14411519132494872" ±					
HOLE DIA. — 1/28823038264989744" ±					
HOLE DIA. — 1/57646076529979488" ±					
HOLE DIA. — 1/115292153059958976" ±					
HOLE DIA. — 1/230584306119917952" ±					
HOLE DIA. — 1/461168612239835904" ±					
HOLE DIA. — 1/922337224479671808" ±					
HOLE DIA. — 1/1844674448959343616" ±					
HOLE DIA. — 1/3689348897918687232" ±					
HOLE DIA. — 1/7378697795837374464" ±					
HOLE DIA. — 1/14757395591674748928" ±					
HOLE DIA. — 1/29514791183349497856" ±					
HOLE DIA. — 1/59029582366698995712" ±					
HOLE DIA. — 1/118059164733397991424" ±					
HOLE DIA. — 1/236118329466795982848" ±					
HOLE DIA. — 1/472236658933591965696" ±					
HOLE DIA. — 1/944473317867183931392" ±					
HOLE DIA. — 1/1888946635734367862784" ±					
HOLE DIA. — 1/3777893271468735725568" ±					
HOLE DIA. — 1/7555786542937471451136" ±					
HOLE DIA. — 1/1511157308587494292272" ±					
HOLE DIA. — 1/3022314617174988584544" ±					
HOLE DIA. — 1/6044629234349977169088" ±					
HOLE DIA. — 1/12089258468699943378176" ±					
HOLE DIA. — 1/24178516937399886756352" ±					
HOLE DIA. — 1/48357033874799773512704" ±					
HOLE DIA. — 1/96714067749599547025408" ±					
HOLE DIA. — 1/193428135499199094050816" ±					
HOLE DIA. — 1/386856270998398188101632" ±					
HOLE DIA. — 1/773712541996796376203264" ±					
HOLE DIA. — 1/1547425083993592752406528" ±					
HOLE DIA. — 1/3094850167987185504813152" ±					
HOLE DIA. — 1/6189700335974371009626304" ±					
HOLE DIA. — 1/12379400671948742019252608" ±					
HOLE DIA. — 1/24758801343897484038505216" ±					
HOLE DIA. — 1/49517602687794968077010432" ±					
HOLE DIA. — 1/99035205375589936154020864" ±					
HOLE DIA. — 1/198070410751799732308041728" ±					
HOLE DIA. — 1/396140821503599464616083456" ±					
HOLE DIA. — 1/792281643007198929232166912" ±					
HOLE DIA. — 1/158456328601397858464333824" ±					
HOLE DIA. — 1/316912657202795716912876672" ±					
HOLE DIA. — 1/633825314405591433825753344" ±					
HOLE DIA. — 1/1267650628811182867651506688" ±					
HOLE DIA. — 1/2535301257622365735303013376" ±					
HOLE DIA. — 1/5070602515244731470606026752" ±					
HOLE DIA. — 1/10141205030489462941212053504" ±					
HOLE DIA. — 1/20282410060978925882424107008" ±					
HOLE DIA. — 1/40564820121957851764848214016" ±					
HOLE DIA. — 1/81129640243915703529696428032" ±					
HOLE DIA. — 1/162259284887835407159392856064" ±					
HOLE DIA. — 1/324518569775670814318785712128" ±					
HOLE DIA. — 1/649037139551341628637571424256" ±					
HOLE DIA. — 1/1298074279102683257275142848512" ±					
HOLE DIA. — 1/2596148558205366514550302897024" ±					
HOLE DIA. — 1/5192297116410733029100617794048" ±					
HOLE DIA. — 1/10384594232821466058201235480992" ±					
HOLE DIA. — 1/20769188465642932116402470961984" ±					
HOLE DIA. — 1/41538376931285864228804941923968" ±					
HOLE DIA. — 1/83076753862571728457609883847936" ±					
HOLE DIA. — 1/16615350772514345691521977769872" ±					
HOLE DIA. — 1/33230701545028691383043955395744" ±					
HOLE DIA. — 1/66461403090057382766087910791488" ±					
HOLE DIA. — 1/132922806180114765532175821583936" ±					
HOLE DIA. — 1/2658456123602295310643516431678784" ±					
HOLE DIA. — 1/5316912247204590621286993263357568" ±					
HOLE DIA. — 1/10633824494409181242573986526715136" ±					
HOLE DIA. — 1/21267648988818362485147972053430272" ±					
HOLE DIA. — 1/42535297977636724970295944106860544" ±					
HOLE DIA. — 1/85070595955273449940591888213721088" ±					
HOLE DIA. — 1/170141191910546899881183764426442176" ±					
HOLE DIA. — 1/340282383821093799762367528852884352" ±					
HOLE DIA. — 1/680564767642187599524735057705767008" ±					
HOLE DIA. — 1/136112953528437519904890011554114414016" ±					
HOLE DIA. — 1/272225907056875039809780023108228828032" ±					
HOLE DIA. — 1/544451814113750079619560046216457656064" ±					
HOLE DIA. — 1/1088903628227500159239120092429114112128" ±					
HOLE DIA. — 1/2177807256455000318478240184858228224256" ±					
HOLE DIA. — 1/435561451291000063695648036971645644512" ±					
HOLE DIA. — 1/871122902582000127391296073943291289024" ±					
HOLE DIA. — 1/1742245845644000254782592147886582578048" ±					
HOLE DIA. — 1/348449169128800050956518429577317561536" ±					
HOLE DIA. — 1/696898338257600101913036591554351222272" ±					
HOLE DIA. — 1/13937966765552002038260718231088644444448" ±					
HOLE DIA. — 1/278759335311040040765214364621772888896" ±					
HOLE DIA. — 1/557518670622080081530428729243545777792" ±					
HOLE DIA. — 1/1115037341244160163060857458487091555584" ±					
HOLE DIA. — 1/2230074682488320326121714969741831111168" ±					
HOLE DIA. — 1/4460149364976640652243429939483662222336" ±					
HOLE DIA. — 1/8920298729953281304486859878967324444672" ±					
HOLE DIA. — 1/1784059745990656260973719757793464888944" ±					
HOLE DIA. — 1/3568119491981312521947439515588929777888" ±					
HOLE DIA. — 1/7136238983962625043894879031177859555776" ±					
HOLE DIA. — 1/1427247796792525008778974066235571111552" ±					
HOLE DIA. — 1/28544955935850500175579481324711111111111" ±					
HOLE DIA. — 1/57089911871701000351158962648222222222222" ±					
HOLE DIA. — 1/114179837743402000702317913296444444444444" ±					
HOLE DIA. — 1/228359675486804001404635826592888888888888" ±					
HOLE DIA. — 1/456719350973608002809271713195777777777777" ±					
HOLE DIA. — 1/913438701947216005618543426391555555555555" ±					
HOLE DIA. — 1/1826877403894432011237708692783111111111111" ±					
HOLE DIA. — 1/365375480778886402275417378556622222222222" ±					
HOLE DIA. — 1/730750961557772804550834757113244444444444" ±					
HOLE DIA. — 1/1461501923115445609016695142266888888888888" ±					
HOLE DIA. — 1/292300384623089121803339028453377777777777" ±					
HOLE DIA. — 1/584600769246178243606678056906755555555555" ±					
HOLE DIA. — 1/1169201538492356472133371137813511111111111" ±					
HOLE DIA. — 1/2338403076984712944266742275627022222					