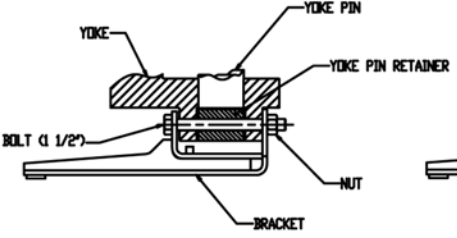
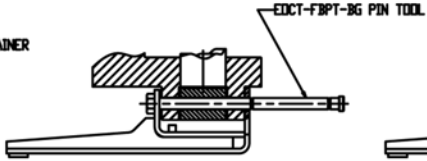


THIS DRAWING IS THE PROPERTY OF STRATO, INC. IT SHALL NOT BE REPRODUCED IN ANY MANNER, AND SHALL BE RETURNED TO THE ORIGINAL SOURCE IMMEDIATELY UPON REQUEST. IT IS THE USER'S RESPONSIBILITY TO OBTAIN THE LATEST REVISIONS. ANY CHANGES TO THIS DRAWING SHALL BE MADE ON A SEPARATE DRAWING. ANY CHANGES TO THIS DRAWING SHALL BE MADE ON A SEPARATE DRAWING. ANY CHANGES TO THIS DRAWING SHALL BE MADE ON A SEPARATE DRAWING.

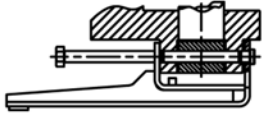
WARNING!!!
THE BRACKET (AND OTHER PARTS IF NECESSARY) MUST BE SUPPORTED DURING THE ENTIRE PROCESS TO PREVENT PERSONAL INJURY AND/OR PROPERTY DAMAGE



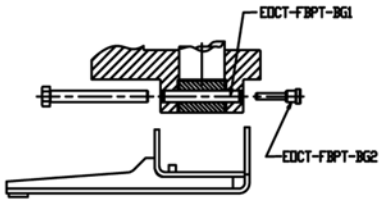
STEP 1.
 REMOVE THE NUT (LOOSEN, CUT OR BURN OFF)



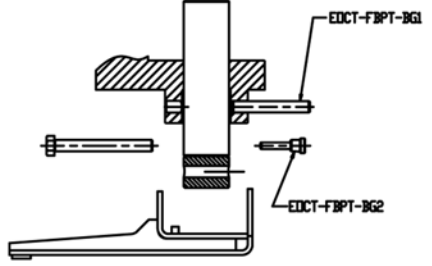
STEP 2.
 ALIGN PIN TOOL WITH BOLT



STEP 3.
 DRIVE PIN TOOL UNTIL ITS SHOULDER REACHES THE BRACKET



STEP 4.
 REMOVE BOLT AND THE END OF THE PIN TOOL (EOCT-FBPT-BG2); LEAVE THE ALIGNMENT PIN (EOCT-FBPT-BG1) IN THE YOKE TO HOLD THE YOKE PIN IN POSITION.



STEP 5 (OPTIONAL)
 TO REMOVE YOKE PIN, REMOVE PIN TOOL FIRST AS SHOWN.
 TO INSTALL, POSITION YOKE PIN AND YOKE PIN RETAINER, THEN USING THE PIN TOOL TO ALIGN BOLT HOLES AND HOLD THE PARTS IN POSITION (RETURN TO STEP 4'S POSITION).

NOTE:
 1. FOLLOW THESE STEPS TO REMOVE BOLT AND BRACKET.
 2. TO INSTALL, REVERSE THE ABOVE PROCEDURE, USE THE NEW BOLT TO PUSH OUT THE PIN TOOL.
 3. BRACKET PIN TOOL EOCT-FBPT-BG WORKS FOR STRATO FB-F43A AND FB-F43C BRACKETS (THESE TWO BRACKETS USE 1 1/2" BOLT), WITH OPEN WORKING SPACE.
 4. FB-F43A IS SHOWN IN THIS INSTRUCTION.
 5. DO NOT USE THIS TOOL ON ANY OTHER BRACKET OF DIFFERENT STYLE, AND BE CAUTIOUS WHEN USING IT ON BRACKETS OF SIMILAR STYLE WHICH ARE NOT LISTED BY THIS INSTRUCTION.

NEXT HIGHER ASSEMBLY X				100 New England Avenue Pawtucket, R.I. 02860	
REFERENCE DRAWINGS				80-70 REV. A	
UNLESS OTHERWISE SPECIFIED TOLERANCES ARE AS FOLLOWS:		DESCRIPTION APPLICATION INSTRUCTION -1 1/2" PIN TOOL OPERATION			
FINISHES — 2 SSP TYP. PLACES — 2 GSB WELD PLACES — 2 GSB ANGLES — 2 SF HOLE ANG. — 2 15-DAL FILLS & GROOVES AND OTHER FINISHED SURFACES — 2	DRAWN BY czhang CHECKED BY [] DATE CREATED 09/08/2004 REV. DATE []	SCALE NTS SHEET 1 OF 1		DWG. NO. EOCT-FBPT-BG-IW REV []	