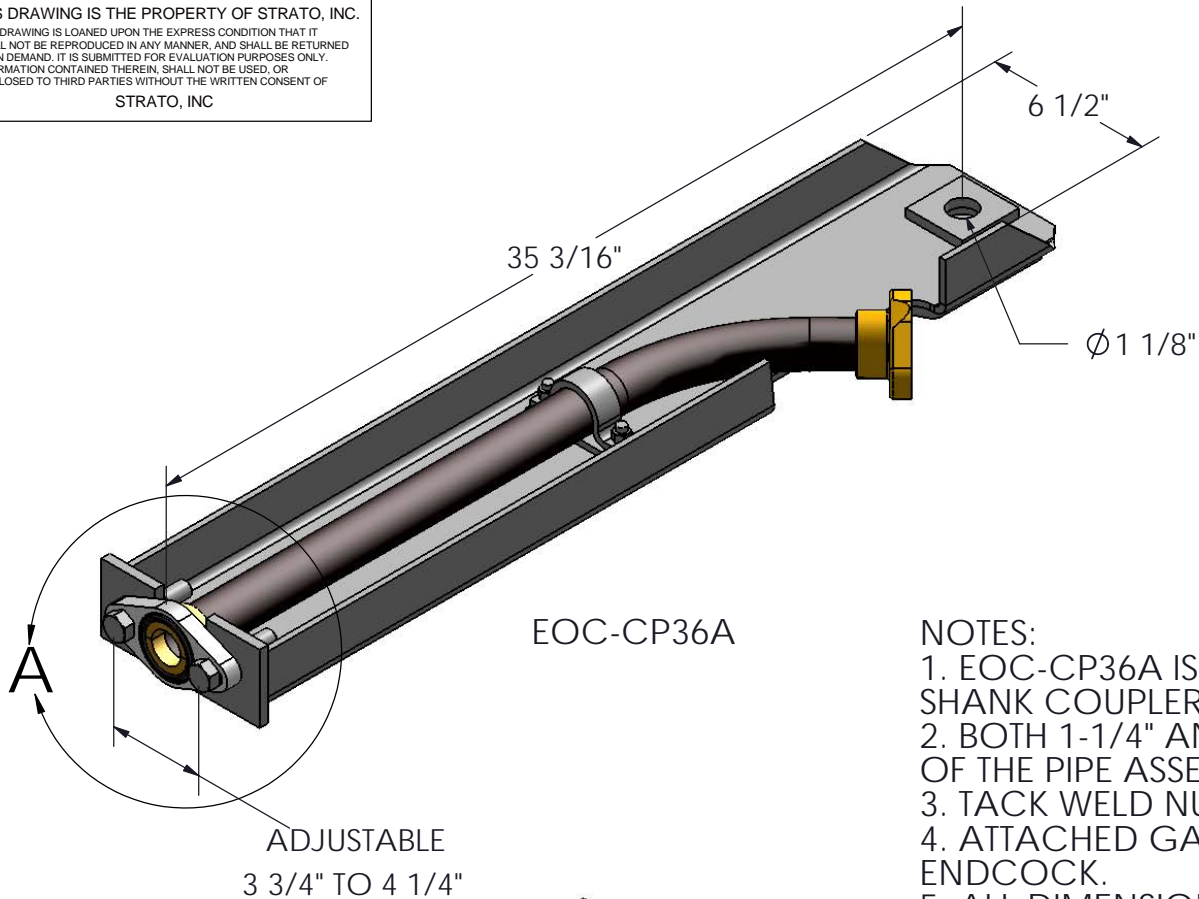
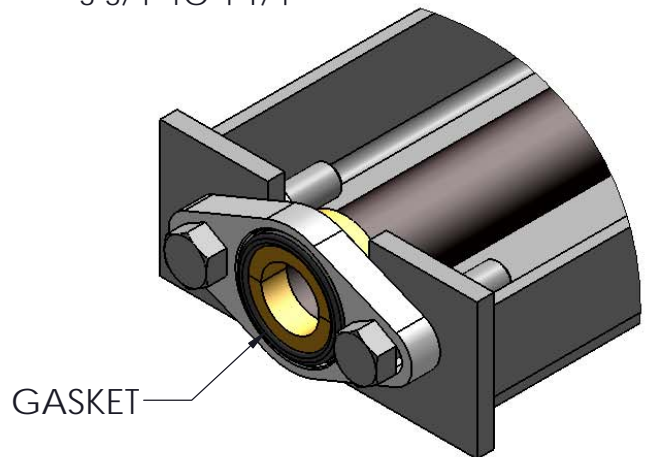
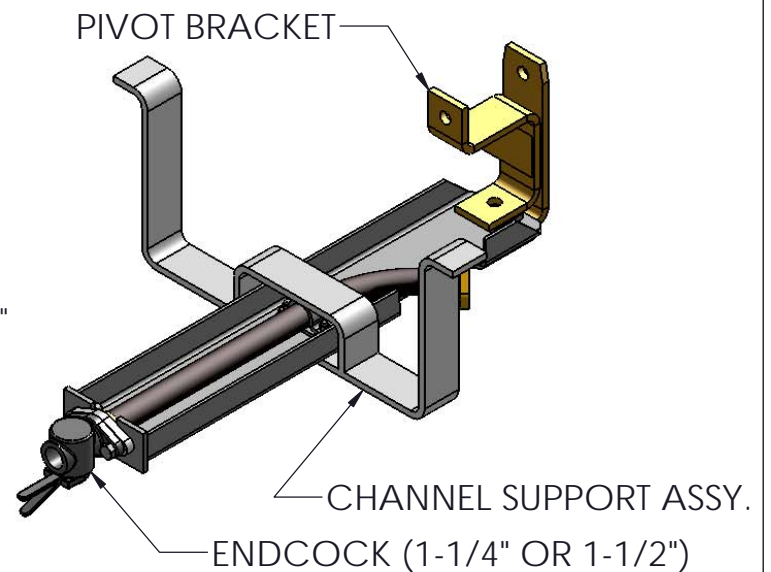


THIS DRAWING IS THE PROPERTY OF STRATO, INC. THIS DRAWING IS LOANED UPON THE EXPRESS CONDITION THAT IT SHALL NOT BE REPRODUCED IN ANY MANNER, AND SHALL BE RETURNED UPON DEMAND. IT IS SUBMITTED FOR EVALUATION PURPOSES ONLY. INFORMATION CONTAINED THEREIN, SHALL NOT BE USED, OR DISCLOSED TO THIRD PARTIES WITHOUT THE WRITTEN CONSENT OF STRATO, INC.




EOC-CP36A



DETAIL A

- NOTES:
- EOC-CP36A IS USED FOR CUSHION CARS WITH 60" F SHANK COUPLERS.
 - BOTH 1-1/4" AND 1-1/2" ENDCOCKS CAN FIT IN THE END OF THE PIPE ASSEMBLY.
 - TACK WELD NUTS TO BOLTS AFTER ENDCOCK IS INSTALLED.
 - ATTACHED GASKET MUST BE USED WHEN INSTALLING ENDCOCK.
 - ALL DIMENSIONS ARE REFERENCE ONLY. CONTACT STRATO FOR CUSTOMER DRAWING (EOC-CP36A-CUST) FOR MORE DETAILS.
 - ENDCOCK, CHANNEL SUPPORT ASSY. AND PIVOT BRACKET ARE NOT INCLUDED IN THIS ASSEMBLY. CONSULT STRATO FOR DETAILS.

| REV. | DATE | DESCRIPTION | ECN | INITIATED BY | APPRVD BY |
|------|------|-------------|-----|--------------|-----------|
| | | | | | |

| | | | | |
|---------------------------------|--------------------|---|---|----------|
| NEXT HIGHER ASSEMBLY | |  Quality Railroad Products | 100 New England Avenue Piscataway, N.J. 08854 | |
| X | REFERENCE DRAWINGS | | SD-4 REV. D | |
| DESCRIPTION | | | | |
| INSTRUCTION SHEET FOR EOC-CP36A | | | | |
| DRAWN BY | | CHECKED BY | | DATE |
| LH | | EQ | | 03/03/05 |
| SCALE | | DWG. NO. | | REV |
| 1:1 | | EOC-CP36A-IW | | |
| SHEET 1 OF 1 | | | | |

UNLESS OTHERWISE SPECIFIED TOLERANCES ARE AS FOLLOWS:

| | |
|------------------|------------|
| FRACTIONS | ±1/64" |
| TWO PLACES | ±0.010 |
| THREE PLACES | ±0.005 |
| ANGLES | ±1/2° |
| HOSE ASSY. | ±1% O.A.L. |
| FINISHED SURFACE | 125 |

FILLETS & EDGES .02R OR CHAMF.